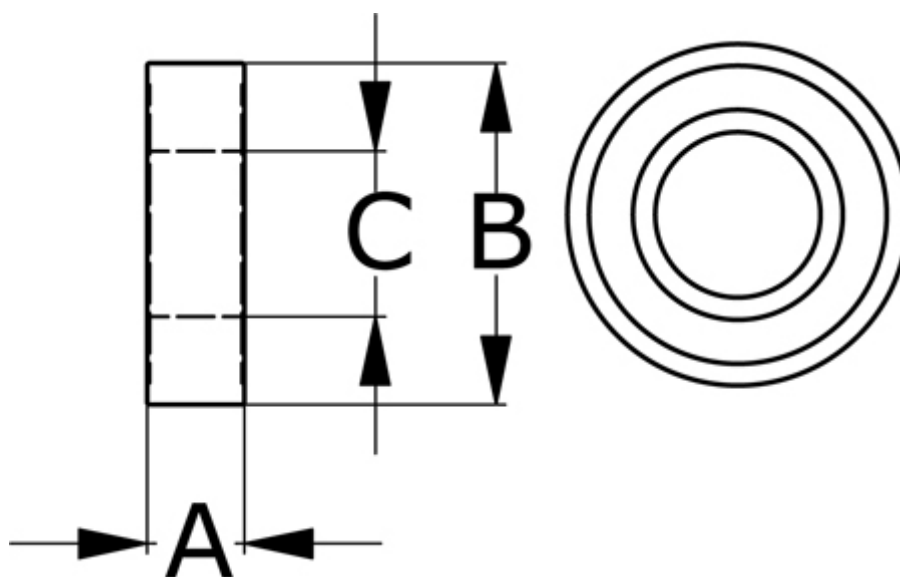


Article number: 5798013501

Description: Tsubaki Cam clutch bearing BB35 (6207)  
d=35 D=72 T=17, for press fit installation steel sealed

## Measures

---



|              |       |
|--------------|-------|
| A            | = 17  |
| B            | = 72  |
| C            | = 35  |
| Torque (N m) | = 173 |